

Table of Contents

Overview of the Configuration Tool 2

Overview of the Configuration Tool

Applications are configured in the Configuration Tool. The screen area of the Configuration Tool is divided into several regions:

- *Elements Tree* (red)
- *Working Area*. (orange)
- *Main Element Properties* (green)
- *Selection Properties* (blue)
- *Additional Windows* (yellow)

The Elements Tree contains the configured elements presented as a hierarchical tree structure. Right clicking on a tree node brings up a pop-up menu specific to the selected element. Most elements provide the *New* and *Open* commands in their pop-up menus that allow adding new elements or editing the existing ones. Once the user selects the New or Open command from a pop-up menu the editor corresponding to the selected element appears in the Working Area. The user can then enter properties of the new element or change properties of the existing element using the controls of the editor. You can also edit an existing element by double clicking on it.

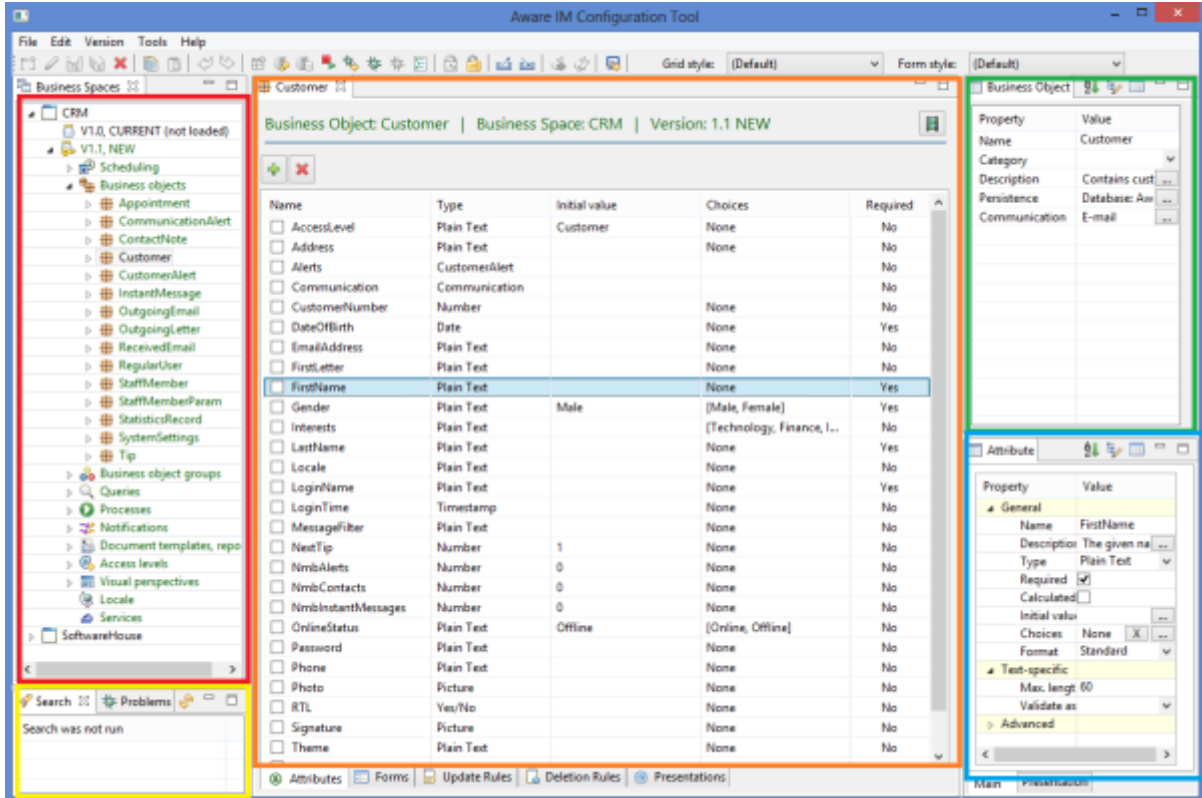
It is possible to enter/edit properties of several elements at the same time – the editors are displayed as different tabs and it is possible to switch between editors by clicking on the corresponding tab. See also [Adding Elements](#), [Editing Elements](#).

The “Main Element Properties window” contains a list of properties of the element being edited – for example, a business object. The “Selection Properties” window shows the properties of the selected sub-element that belongs to the main element. For example, an attribute of the business object being edited.

The “Additional Windows” area contains some other windows – for example, results of search and a list of integrity problems of the business space version.

Note that most windows can be moved around the screen, so that the user can re-arrange them the way it suits him/her.

The screen of the Configuration Tool also contains the main menu and the toolbar that allows performing frequently used operations.



Configuration elements of an application are contained in [business space versions](#); business space versions exist in a [business space](#). After the initial installation the Configuration Tool contains one business space with two business space versions (which have some pre-defined elements). One of these versions is in the NEW state and is ready for modifications. Configuration work usually begins with configuring business space-specific elements in this version – see [Working with Business Space Versions](#).

From: <http://www.awareim.com/dokuwiki/> - **Documentation**

Permanent link: http://www.awareim.com/dokuwiki/docs/2500_config_apps/0100_overview?rev=1661472764

Last update: **2022/09/13 18:06**

